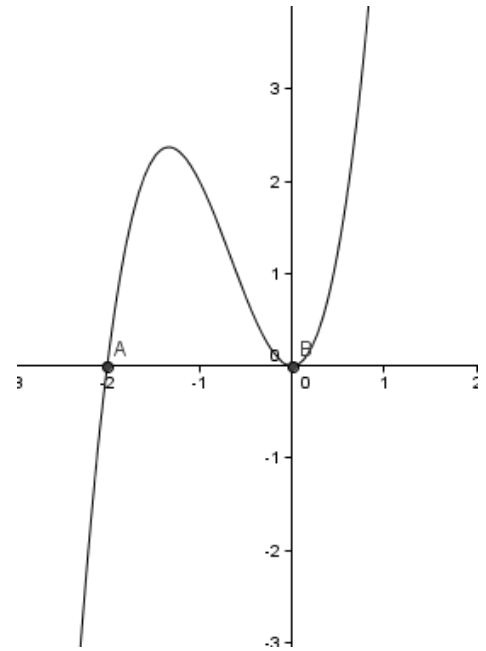


Q1. The graph of $y = f(x)$ is shown below. Sketch the graphs of the following:

- (i) $y = f(x) + 2$
- (ii) $y = f(x - 3)$
- (iii) $y = 1 - f(x)$
- (iv) $y = f(-x)$



Q2. Sketch the graph of

$$y = \sin(2x + 60)^\circ \text{ where } 0^\circ \leq x \leq 180^\circ$$

Q3. State the values of a and b for the

Function below that is of the form

$$y = a \cos(x + b)$$

