

Q1. Find

(a) $\int \frac{1}{6x^2} dx$

(b) $\int x^3(x + 2)dx$

(c) $\int \frac{2x^3+3}{4} dx$

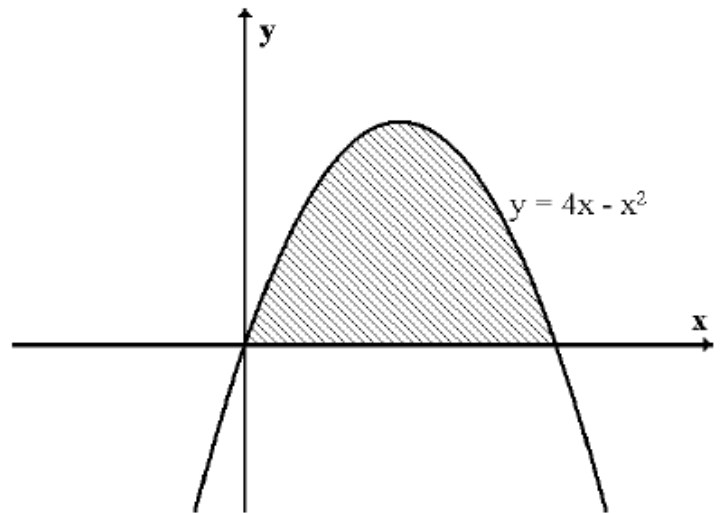
Q2. Evaluate the following:

(a) $\int_0^3 (3x + 2)dx$

(b) $\int_{-1}^5 (3x + 4)^2 dx$

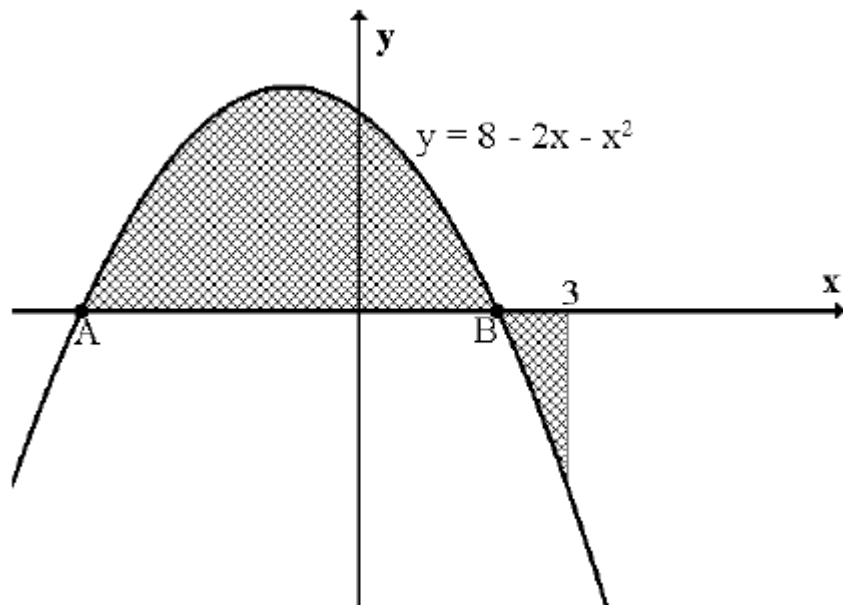
(c) $\int_1^{16} \frac{\sqrt{x}-4}{\sqrt{x}} dx$

Q3. The diagram shows the graph of $y = 4x - x^2$. Calculate the area between the curve and the x - axis



Q4. (a) Find the coordinates of A and B

(b) Calculate the shaded area.



Q5. If $f'(x) = 4x(x - 1)$

And $f(-1) = 2$. Find a formula for $f(x)$

Q6. Find the area of the Region enclosed by the given curve $y = 5x - x^2$ and the line $x + y - 8 = 0$

